

**canfield connector**  
8510 Foxwood Court  
Youngstown, Ohio 44514  
(330) 758-8299 Fax: (330) 758-8912  
www.canfieldconnector.com

## SERIES 9C

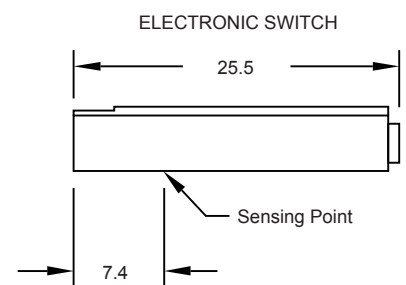
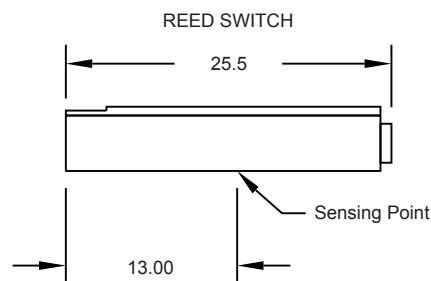
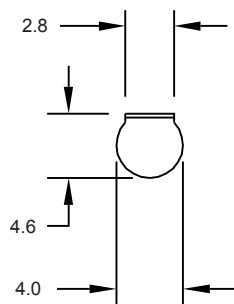
## REED & ELECTRONIC MAGNETIC SENSORS FOR ROUND KEYWAY GROOVE

### General Description

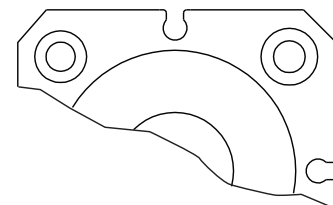
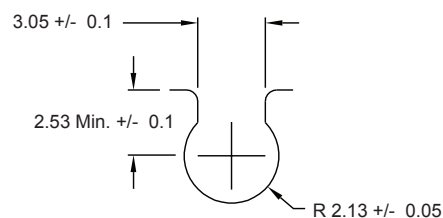
The Series 9C is a compact, universal, magnetically operated proximity switch commonly used on aluminum extruded profile type linear actuators equipped with magnetic pistons. The switches are available in both reed and electronic styles and made to fit into a 4mm key hole type slot. Position fixing is accomplished by means of a screw that is supplied in the switch body. The on board indicator light shows instant switch diagnostics to minimize downtime and facilitate installation and can be seen from wide angles. Available in the standard 9 ft. PVC wired or optional 8mm quick connect, the switch can handle AC or DC current in several configurations. The 9C is assembled in engineered polymers and designed to meet NEMA 6 / IP 67 environmental specifications.

### Dimensional Data

ALL DIMENSIONS ARE IN MILLIMETERS UNLESS OTHERWISE NOTED



### GROOVE DIMENSIONS



## Features

- Ultra small sensor fits where other sensors will not
- Reverse polarity protection and surge suppression (electronic)
- Indicator light
- Corrosion and washdown resistance
- Solid state version available (no moving parts)
- Quick connect version
- 9 ft cable standard

## Technical Data

- Temperature Range: operational from -10° to +70°C
- Sensitivity and orientation: 40 gauss parallel (electronic)  
60 gauss parallel (reed)
- Meets NEMA 6 / IP67 specifications
- CE Approved

## Ordering Information

9 C 1 0 - 0 0 0 -         

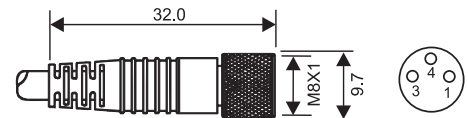
### Connection Options

- 0 - 9 ft PVC cable
- 3 - 8mm quick connect male pigtail\*

\*Mates with cordsets shown at right.

### Mating Cordsets

8mm female molded locking connectors



Brown = Pin 1  
Blue = Pin 3  
Black = Pin 4

Order part number  
RC08S-F0M030120 (2m length)  
RC08S-F0M030150 (5m length)

Type	Description	Function	Switching Voltage	Switching Current	Switching Power	Voltage Drop	** Magnetic Sensitivity
02	Reed Switch & LED	Normally Open SPST	5 - 120V AC/DC 50/60 Hz	0.03 Amps Max.	4 watts Max.	2.5 Volts @ 40mA	60 Ga.
31	Electronic for Reed Magnet, LED & Sourcing	Normally Open PNP	5 - 28 VDC	0.2 Amps Max.	4.8 watts Max.	.5 Volts @ 200mA	40 Ga.
32	Electronic for Reed Magnet, LED & Sinking	Normally Open NPN	5 - 28 VDC	0.2 Amps Max.	4.8 watts Max.	.5 Volts @ 200mA	40 Ga.

\*\*Minimum gauss rating required for proper operation. Size of sensing area depends upon size and strength of magnet and thickness of cylinder wall.

### Ordering Example:

9C10-000-032

9 ft. PVC cable, electronic for reed magnet, LED, sinking, NPN, 5 - 28 VDC

For convenience and faster shipping, this series is available in Can-Paks.

