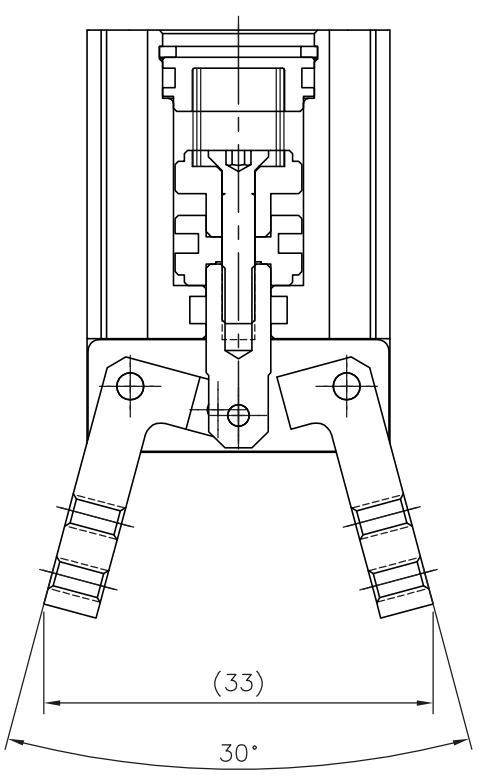
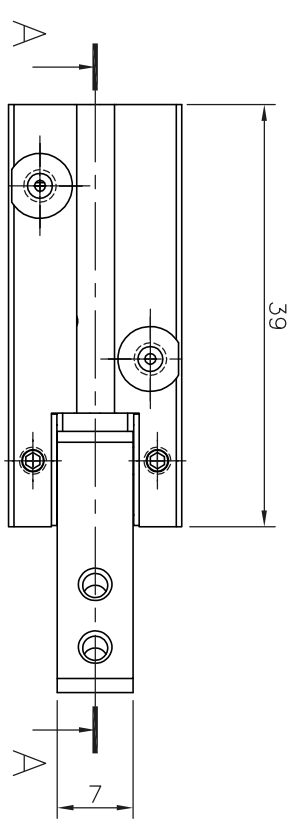
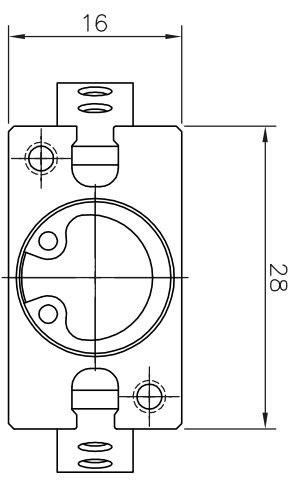


【E-01】A1
 一般公差
 1 >±0.1
 4 >±0.2
 16 >±0.3
 50 >±0.4
 120 >±0.5
 250 >±0.6
 500 >±0.8
 1000 >±1.0
 3000 >±1.0
 角度公差±0.5°
 孔間隔公差±0.25



表面粗糙度	度
500S	500S
400S	400S
320S	320S
250S	250S
200S	200S
160S	160S
125S	125S
100S	100S
80S	80S
63S	63S
50S	50S
40S	40S
32S	32S
25S	25S
20S	20S
16S	16S
12.5S	12.5S
10.0S	10.0S
8.0S	8.0S
6.3S	6.3S
5.0S	5.0S
4.0S	4.0S
3.2S	3.2S
2.5S	2.5S
2.0S	2.0S
1.6S	1.6S
1.25S	1.25S
1.0S	1.0S
0.8S	0.8S
0.63S	0.63S
0.50S	0.50S
0.40S	0.40S
0.32S	0.32S
0.25S	0.25S
0.20S	0.20S
0.125S	0.125S
0.100S	0.100S
0.080S	0.080S
0.063S	0.063S
0.050S	0.050S
0.040S	0.040S



A—A

圖名	MCHA-φ12 單動常閉 外觀尺寸圖		材質	MCHA-12-0002B		處理	審核		主加工	▽▽	比例	2:1	日期	97.07.14
設計變更日期記錄欄	1	2	圖號	4	5	6	7	8	9	設計	陳登財	製圖	陳登財	