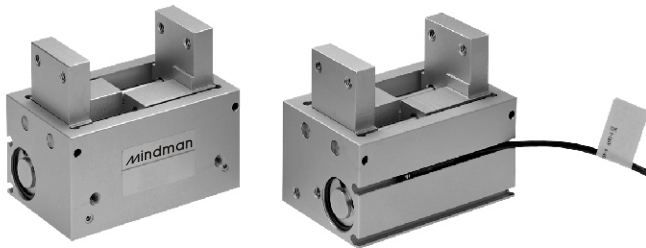


# MCHU series

## SLIM PARALLEL GRIPPERS



### Features:

- Compact design, low weight with rugged construction.
- Jaws mounted to wear resistant bush guides.
- Proximity and reed switches can be used with this unit.

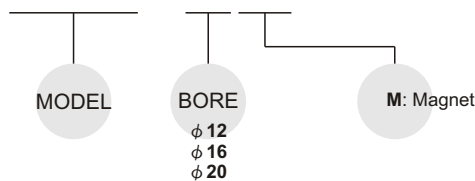
### Specification:

Model	MCHU-12	MCHU-16	MCHU-20
Acting type	Double acting		
Bore (mm)	12	16	20
Stroke	15	20	25
Fluid	Air 1~7.1 kgf/cm <sup>2</sup>		
Ambient temperature	- 10~ + 60°C (No freezing)		
Lubrication	Not required		
Repeatability	±0.03 mm		
Gripping force	20~49	39~78	78~118
Sensor switch	RT: Reed switch, RTN: NPN, RTP: PNP		
Weight (kg)	0.16	0.28	0.51

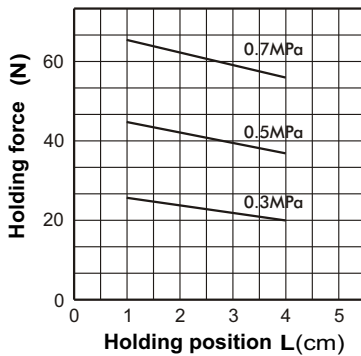
- Maintenance: Re-Lubrication after appr. 1.5 million cycles recommended.

### Order example:

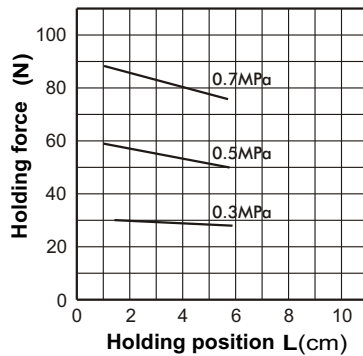
**MCHU – 12 M**



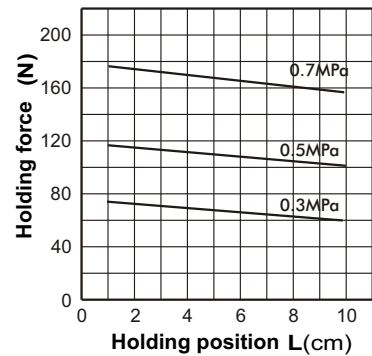
**MCHU-12**



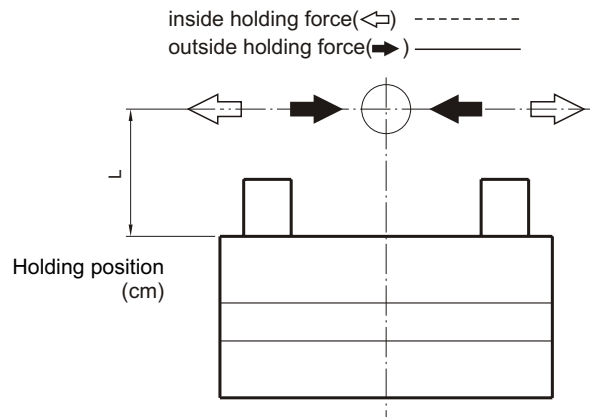
**MCHU-16**



**MCHU-20**

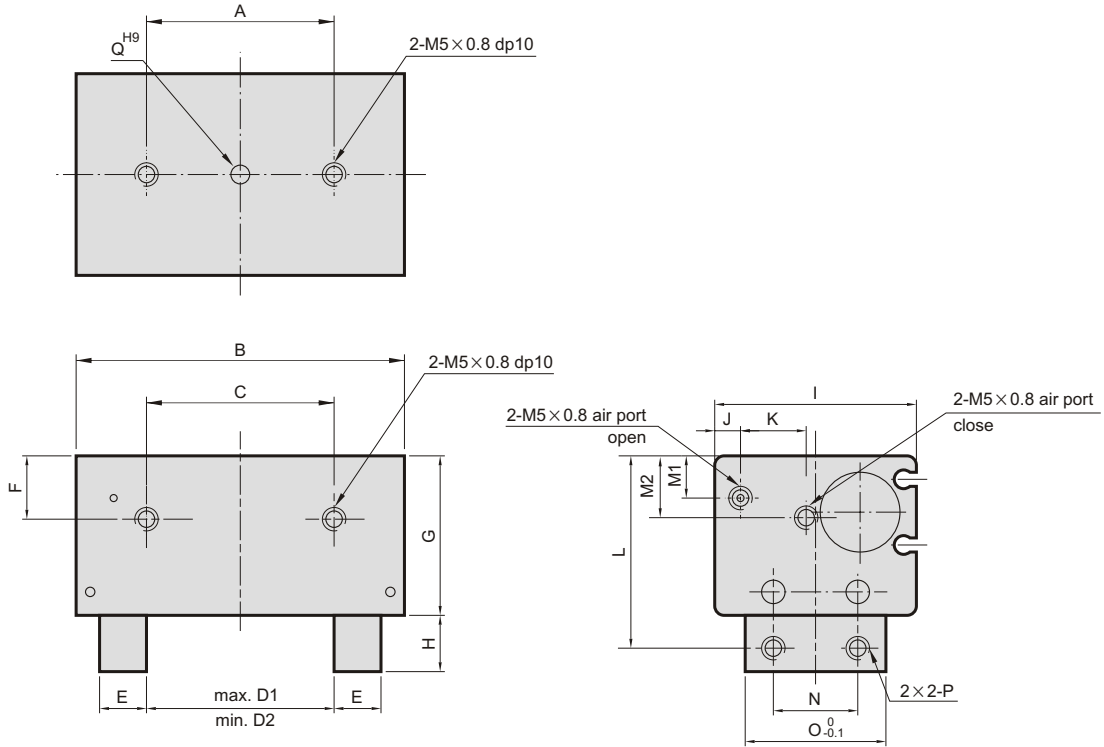


- With reference to the holding force, under the condition must be considered.
- Condition: friction coefficient, great acceleration impact is expected during work piece rotate.
- It recommend: select a type of arithmetic holding force that can produce 10 to 20 times for work piece weight.



# MCHU Dimensions $\phi 12 \sim \phi 20$

## SLIM PARALLEL GRIPPERS



Code Model	A	B	C	D1	D2	E	F	G	H	I	J	K	L	M1	M2	N	O ( $\frac{0}{-0.1}$ )	P	Q <sup>H9</sup>
$\phi 12$	30	54	30	30	15	6	12	29	10	38	6	10	35	6.5	9	14	22	M4 x 0.7	$\phi 2^{+0.025}_{-0} \times 2$ dp
$\phi 16$	40	70	40	40	20	10	13.5	34	12	43	7	12	41	7	10	18	30	M5 x 0.8	$\phi 3^{+0.025}_{-0} \times 4$ dp
$\phi 20$	60	82	60	50	25	10	15	43	22	56	11.5	12.5	59	10	20.5	20	35	M5 x 0.8	$\phi 3^{+0.025}_{-0} \times 6$ dp