

## OVAL CUPS

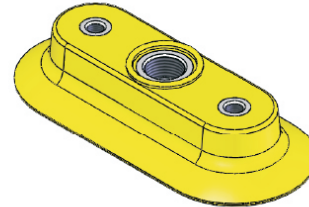
### HOW TO ORDER

CUP STYLE
OF
OC = Smooth Bottom
OF = Cleated Bottom

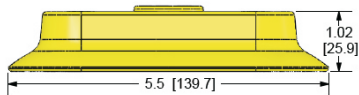
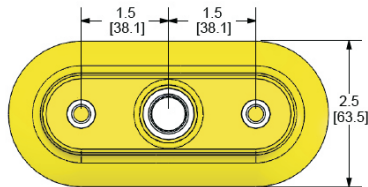
60X140

CUP MATERIAL
N
N = Nitrile
S = Silicone

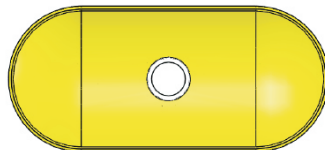
PORTS
G
BLANK = NPTF
G = BSPP



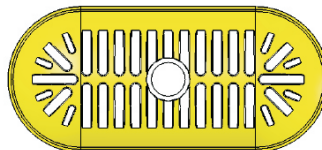
VACUUM  
CUPS



OC-60X140



OF-60X140



TECHNICAL DATA	OC	OF
CUP DIMENSIONS	60mm X 140mm	60mm X 140mm
STROKE: in. (mm)	0.29 (7.4)	0.18 (4.6)
CUP WEIGHT: oz. (g)	4.1 (116)	4.2 (119)
INTERNAL VOLUME: cu. in. (cc)	3.2 (52.4)	3.0 (49.2)
FORCE @ 6" Hg: lb. (N)	29 (129)	29 (129)
FORCE @ 18" Hg: lb. (N)	83 (369)	83 (369)
MINIMUM RADIUS: in. (mm)	1.5 (38.1)	3.0 (76.2)
SHEAR LOAD <sup>2</sup> : lb. (N)	41 (182)	41 (182)

<sup>2</sup>All figures for shear load are 18"Hg. using a 0.5 coefficient of friction. Adjust coefficient of friction to suit your conditions, then apply a generous factor of safety (3:1 or greater) to shear loads.



**Robo-Tool, Inc.**

PART NUMBER

**OF-60X140S**